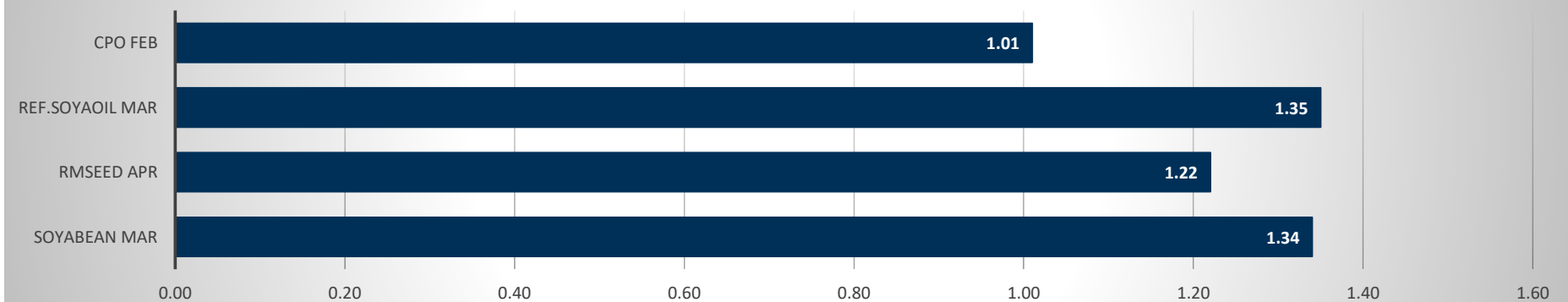


Commodity	Open	High	Low	Close	Rs.Chg	% Chg	Spot	Vol	OI	OI Chg	OI STATUS
Soyabean Mar	4750.00	4815.00	4750.00	4778.00	63.00	1.34	4901.00	46740	211270	4.84	Fresh Buying
Rmseed Apr	5215.00	5240.00	5186.00	5228.00	63.00	1.22	6425.35	14390	23480	1.38	Fresh Buying
Ref.Soyaoil Mar	1120.00	1132.00	1119.60	1128.40	15.00	1.35	1125.65	27930	35200	14.38	Fresh Buying
Cpo Feb	1017.20	1022.40	1008.00	1011.10	10.10	1.01	1012.80	2384	5825	-3.06	Short Covering

Commodity	Daily Levels								Trend	Performance			
	Close	Res - 3	Res - 2	Res - 1	Pivot	Sup - 1	Sup - 2	Sup - 3		1 Week	1 Month	3 Month	1 Year
Soyabean Mar	4778.00	4877.0	4846.0	4812.0	4781.0	4747.0	4716.0	4682.0	Positive	3.41	2.13	8.69	15.24
Rmseed Apr	5228.00	5304.0	5272.0	5250.0	5218.0	5196.0	5164.0	5142.0	Positive	2.89	-15.46	-19.47	22.49
Ref.Soyaoil Mar	1128.40	1146.0	1139.0	1134.0	1127.0	1122.0	1115.0	1110.0	Positive	2.98	-5.41	11.55	25.70
Cpo Feb	1011.10	1034.0	1028.2	1019.6	1013.8	1005.2	999.4	990.8	Positive	6.53	1.16	13.80	25.63

Price Movement

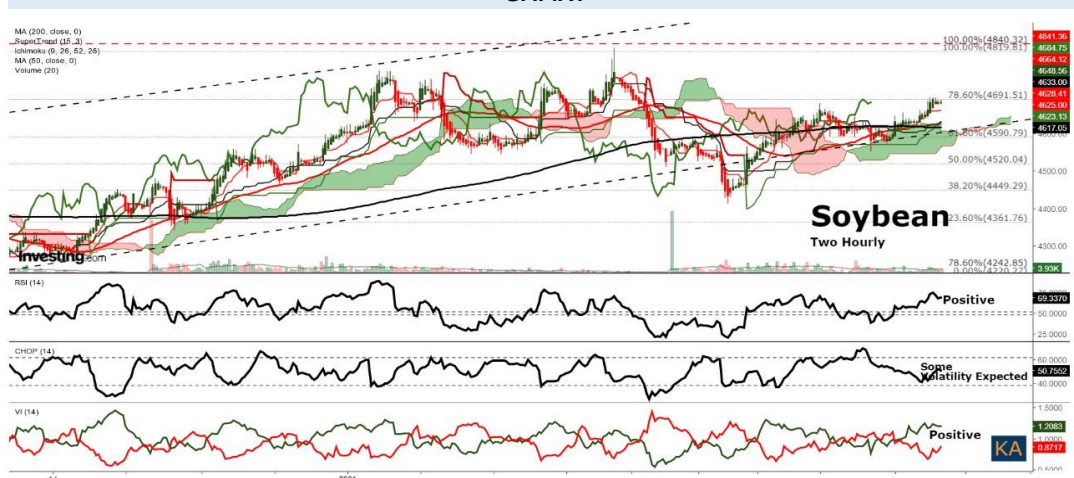


DAILY SOYABEAN SYPNOSIS

Expiry	Open	High	Low	Close	Rs.Chg	% Chg	Spot	Vol	OI	OI Chg	Fut-Spot	OI STATUS
19 MAR 2021	4750.00	4815.00	4750.00	4778.00	63.00	1.34	4901.00	46740	211270	4.84	-123.00	Fresh Buying
20 APR 2021	4735.00	4810.00	4735.00	4776.00	62.00	1.32	4901.00	7295	27040	16.50	-125.00	Fresh Buying
20 MAY 2021	4810.00	4810.00	4810.00	4810.00	110.00	2.34	4901.00	20	30	200.00	-91.00	Fresh Buying

- Soyabean trading range for the day is 4716-4846.
- Soyabean gained as prices seen supported following improved demand from and US crop damage
- Arrival of new season crop has started, however the pace of arrival is slower than expected.
- Brazilian soybean harvest at slowest pace in a decade on incessant rains
- At the Indore spot market in top producer MP, soybean gained 32 Rupees to 4901 Rupees per 100 kgs.

CHART



TECHNICALS

Simple Moving Average

	5 Days	10 Days	20 Days	50 Days	100 Days	200 Days
Value	4625	4590	4610	4509	4351	4066
Signal	BUY	BUY	BUY	BUY	BUY	BUY

Exponential Moving Average

	5 Days	10 Days	20 Days	50 Days	100 Days	200 Days
Value	4637	4616	4597	4516	4370	4190
Signal	BUY	BUY	BUY	BUY	BUY	BUY

Spread

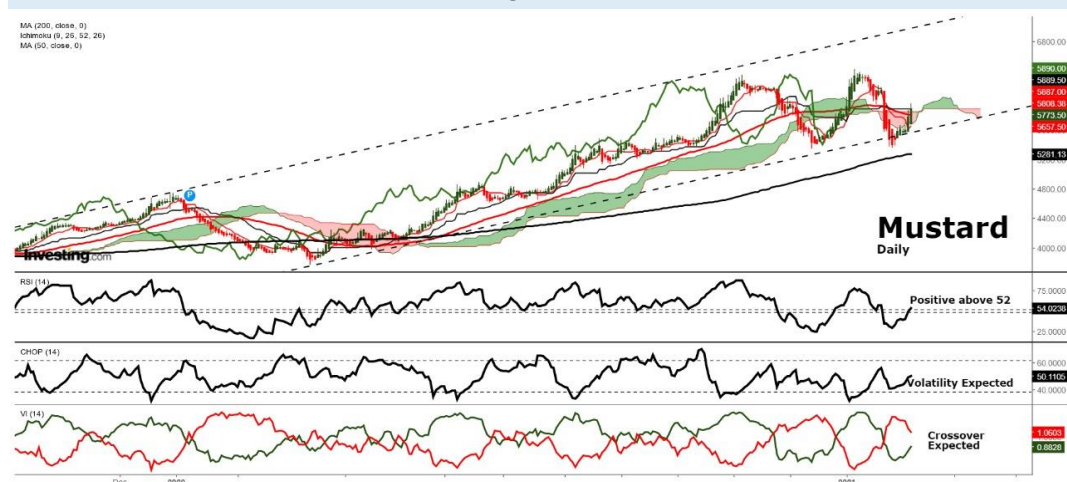
Month	Rate	MAR	APR	MAY
MAR	4778		-2	32
APR	4776			34
MAY	4810			

DAILY RMSEED SYPNOSIS

Expiry	Open	High	Low	Close	Rs.Chg	% Chg	Spot	Vol	OI	OI Chg	Fut-Spot	OI STATUS
15 MAR 2021	5215.00	5240.00	5186.00	5228.00	63.00	1.22	6425.35	14390	23480	1.38	-1197.35	Fresh Buying
20 MAY 2021	5180.00	5235.00	5170.00	5224.00	74.00	1.44	6425.35	810	2830	14.11	-1201.35	Fresh Buying
0-Jan-00	0.00	0.00	0.00	0.00	0.00	0.00	6425.35	0	0	0.00	-6425.35	Long Liquidation

- Rmseed trading range for the day is 5164-5272.
- Mustard seed prices gained as crop is delayed due to cold over northern India.
- New mustard arrivals will start in Uttar Pradesh's mandis.
- Production area of the Rabi season has reached a height of 73.94 lakh hectare
- In Alwar spot market in Rajasthan the prices gained 52.15 Rupees to end at 6425.35 Rupees per 100 kg.

CHART



TECHNICALS

Simple Moving Average

5 Days	10 Days	20 Days	50 Days	100 Days	200 Days
5088	5052	5139	5452	5613	5180
BUY	BUY	SELL	SELL	SELL	SELL

Exponential Moving Average

5 Days	10 Days	20 Days	50 Days	100 Days	200 Days
5090	5095	5181	5387	5421	5204
BUY	BUY	SELL	SELL	SELL	SELL

Spread

Month	Rate	APR	MAY	0
APR	5228		-4	-5228
MAY	5224			-5224
0	0			

DAILY SOYOIL SYPNOSIS

Expiry	Open	High	Low	Close	Rs.Chg	% Chg	Spot	Vol	OI	OI Chg	Fut-Spot	OI STATUS
15 MAR 2021	1120.00	1132.00	1119.60	1128.40	15.00	1.35	1125.65	27930	35200	14.38	2.75	Fresh Buying
20 APR 2021	1114.00	1120.00	1111.00	1116.70	11.00	0.99	1125.65	1665	4565	-0.65	-8.95	Short Covering
20 MAY 2021	1115.60	1115.60	1105.50	1113.40	6.80	0.61	1125.65	40	20	100.00	-12.25	Fresh Buying

- Ref.Soya oil trading range for the day is 1115-1139.
- Ref soyoil prices ended with gains ahead of a USDA report that is pegged to show tighter global supplies.
- Support also seen amid higher demand for edible oils amid winter season and lower imports of Soybean oil in the recent months.
- USDA to make further cuts to its end-of-season supply outlook for soybeans and lower its harvest views for Brazilian and Argentine soy.
- At the Indore spot market in Madhya Pradesh, soyoil was steady at 1125.65 Rupees per 10 kgs.

CHART



TECHNICALS

Simple Moving Average

5 Days	10 Days	20 Days	50 Days	100 Days	200 Days
1102.3	1087.3	1099.9	1103.1	1033.1	929.4
BUY	BUY	BUY	BUY	BUY	BUY

Exponential Moving Average

5 Days	10 Days	20 Days	50 Days	100 Days	200 Days
1100.2	1097.2	1101.3	1088.6	1040.5	968.5
BUY	BUY	BUY	BUY	BUY	BUY

Spread

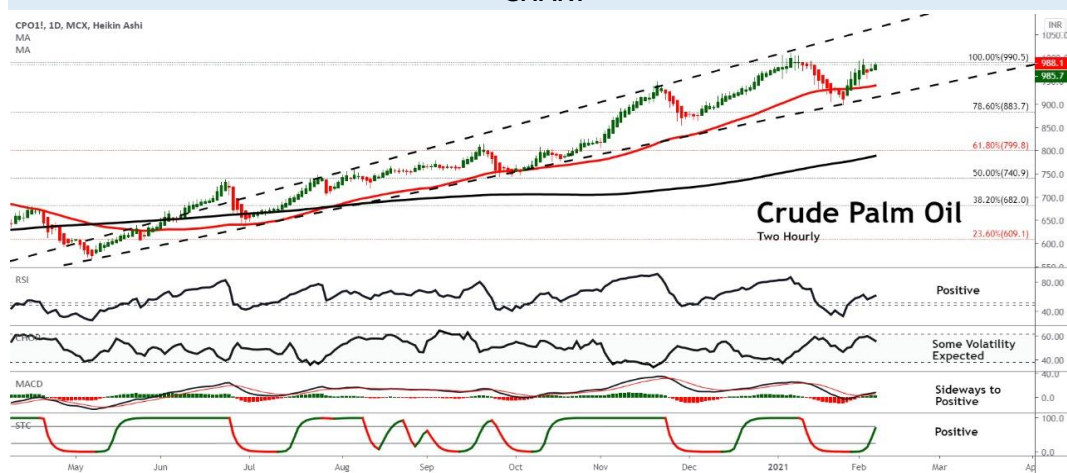
Month	Rate	MAR	APR	MAY
MAR	1128.4		-11.7	-15.0
APR	1116.7			-3.3
MAY	1113.4			

DAILY CRUDE PALM OIL SYPNOSIS

Expiry	Open	High	Low	Close	Rs.Chg	% Chg	Spot	Vol	OI	OI Chg	Fut-Spot	OI STATUS
15 MAR 2021	1017.20	1022.40	1008.00	1011.10	10.10	1.01	1012.80	2384	5825	-3.06	-1.70	Short Covering
31 MAR 2021	1006.20	1009.00	998.90	1001.70	10.50	1.06	1012.80	1062	5644	3.77	-11.10	Fresh Buying
30 APR 2021	979.60	987.00	977.40	982.90	13.40	1.38	1012.80	176	741	10.43	-29.90	Fresh Buying

- CPO trading range for the day is 999.4-1028.2.
- Crude palm oil rose supported by expectations of weak January stocks and lower production.
- Malaysia end-Jan palm oil stocks seen rebounding as exports, output plunge
- Investors are now eyeing official January supply and demand data, as well as February 1-10 export data, scheduled to be released on Wednesday.
- In spot market, Crude palm oil gained by 20.8 Rupees to end at 1012.8 Rupees.

CHART



TECHNICALS

Simple Moving Average

5 Days	10 Days	20 Days	50 Days	100 Days	200 Days
980.7	958.0	957.9	941.4	886.0	792.5
BUY	BUY	BUY	BUY	BUY	BUY

Exponential Moving Average

5 Days	10 Days	20 Days	50 Days	100 Days	200 Days
976.2	966.9	960.2	938.4	893.4	825.9
BUY	BUY	BUY	BUY	BUY	BUY

Spread

Month	Rate	FEB	MAR	APR
FEB	1011.1		-9.4	-28.2
MAR	1001.7			-18.8
APR	982.9			

SOYABEAN PRICE MOVEMENT SINCE 2012

Year						Sowing		Growth	Harvesting				Crop Calendar
	JAN	FEB	MAR	APR	MAY	JUN	JUL	AUG	SEP	OCT	NOV	DEC	
2012	2451.50	2668.50	3085.50	3625.00	3404.00	3968.50	4370.50	3947.50	3201.50	3298.00	3209.50	3203.00	689.00
	-2.49	8.85	15.63	17.49	-6.10	16.58	10.13	-9.68	-18.90	3.01	-2.68	-0.20	27.41
2013	3287.50	3324.50	3641.00	3932.00	3810.00	3670.50	2973.00	3470.00	3531.00	3925.00	3860.00	3819.00	616.00
	2.64	1.13	9.52	7.99	-3.10	-3.66	-19.00	16.72	1.76	11.16	-1.66	-1.06	19.23
2014	3926.50	4165.00	4311.50	4777.50	4592.00	4094.00	3639.00	3358.00	2963.00	3289.00	3300.00	3366.00	-453.00
	2.81	6.07	3.52	10.81	-3.88	-10.84	-11.11	-7.72	-11.76	11.00	0.33	2.00	-11.86
2015	3434.00	3406.00	3458.00	4025.00	3890.00	3329.00	3160.00	3218.00	3429.00	3909.00	3907.00	3880.00	514.00
	2.02	-0.82	1.53	16.40	-3.35	-14.42	-5.08	1.84	6.56	14.00	-0.05	-0.69	15.27
2016	3726.00	3664.00	4010.00	3927.00	3835.00	3740.00	3557.00	3257.00	3235.00	3114.00	3116.00	3029.00	-851.00
	-3.97	-1.66	9.44	-2.07	-2.34	-2.48	-4.89	-8.43	-0.68	-3.74	0.06	-2.79	-21.93
2017	3092.00	3007.00	2941.00	3002.00	2762.00	2925.00	3154.00	3097.00	3033.00	2823.00	3098.00	3118.00	89.00
	2.08	-2.75	-2.19	2.07	-7.99	5.90	7.83	-1.81	-2.07	-6.92	9.74	0.65	2.94
2018	3685.00	3802.00	3756.00	3669.00	3549.00	3566.00	3392.00	3222.00	3233.00	3269.00	3354.00	3399.00	281.00
	18.18	3.18	-1.21	-2.32	-3.27	0.48	-4.88	-5.01	0.34	1.11	2.60	1.34	9.01
2019	3826.00	3637.00	3681.00	3676.00	3718.00	3671.00	3582.00	3825.00	3939.00	3863.00	4072.00	4436.00	1037.00
	12.56	-4.94	1.21	-0.14	1.14	-1.26	-2.42	6.78	2.98	-1.93	5.41	8.94	30.51
2020	4084.00	3708.00	3796.00	3810.00	3830.00	3714.00	3780.00	4116.00	3866.00	4263.00	4415.00	4606.00	170.00
	-7.94	-9.21	2.37	0.37	0.52	-3.03	1.78	8.89	-6.07	10.27	3.57	4.33	3.83
2021	4644.00												38.00
	0.83												0.83

RMSEED PRICE MOVEMENT SINCE 2012

Year	Growth		Harvesting										Sowing			Crop Calendar
	JAN	FEB	MAR	APR	MAY	JUN	JUL	AUG	SEP	OCT	NOV	DEC				
2012	3346.00 1.06	3632.00 8.55	3925.00 8.07	4130.00 5.22	3901.00 -5.54	3990.00 2.28	4397.00 10.20	4452.00 1.25	3927.00 -11.79	4269.00 8.71	4214.00 -1.29	3544.00 -15.90	233.00 7.04			
2013	3492.00 -1.47	3428.00 -1.83	3479.00 1.49	3505.00 0.75	3514.00 0.26	3451.00 -1.79	3182.00 -7.79	3571.00 12.23	3641.00 1.96	3878.00 6.51	3811.00 -1.73	3469.00 -8.97	-75.00 -2.12			
2014	3353.00 -3.34	3537.00 5.49	3504.00 -0.93	3594.00 2.57	3456.00 -3.84	3595.00 4.02	3641.00 1.28	3592.00 -1.35	3693.00 2.81	3763.00 1.90	3885.00 3.24	3524.00 -9.29	55.00 1.59			
2015	3378.00 -4.14	3406.00 0.83	3411.00 0.15	3869.00 13.43	4306.00 11.29	4255.00 -1.18	4232.00 -0.54	4317.00 2.01	4514.00 4.56	4923.00 9.06	4897.00 -0.53	4244.00 -13.33	720.00 20.43			
2016	3877.00 -8.65	3929.00 1.34	4202.00 6.95	4472.00 6.43	4503.00 0.69	4848.00 7.66	4875.00 0.56	4681.00 -3.98	4642.00 -0.83	4498.00 -3.10	4876.00 8.40	3974.00 -18.50	604.00 14.23			
2017	3834.00 -3.52	3848.00 0.37	3908.00 1.56	3759.00 -3.81	3483.00 -7.34	3609.00 3.62	3699.00 2.49	3771.00 1.95	3739.00 -0.85	3897.00 4.23	4104.00 5.31	3939.00 -4.02	-35.00 -0.88			
2018	4187.00 6.30	4125.00 -1.48	4054.00 -1.72	3795.00 -6.39	3958.00 4.30	4027.00 1.74	4214.00 4.64	4070.00 -3.42	4241.00 4.20	4170.00 -1.67	3977.00 -4.63	3929.00 -1.21	-10.00 -0.25			
2019	3983.00 1.37	3840.00 -3.59	3750.00 -2.34	3744.00 -0.16	3718.00 -0.69	3939.00 5.94	3950.00 0.28	3922.00 -0.71	3954.00 0.82	4306.00 8.90	4321.00 0.35	4658.00 7.80	729.00 18.55			
2020	4109.00 -11.79	4000.00 -2.65	4118.00 2.95	4141.00 0.56	4490.00 8.43	4650.00 3.56	5014.00 7.83	5410.00 7.90	5468.00 1.07	6067.00 10.95	5871.00 -3.23	5817.00 -0.92	1159.00 24.88			
2021	5604.00 -3.66												-213.00 -3.66			

SOYOIL PRICE MOVEMENT SINCE 2012

	JAN	FEB	MAR	APR	MAY	JUN	JUL	AUG	SEP	OCT	NOV	DEC	Growth
2012	683.15	712.75	751.40	775.70	735.65	761.50	784.85	792.20	663.20	686.70	720.25	695.80	-37.70
	-6.86	4.33	5.42	3.23	-5.16	3.51	3.07	0.94	-16.28	3.54	4.89	-3.39	-5.52
2013	737.35	680.85	688.10	719.30	715.05	673.00	651.95	703.20	686.20	748.85	713.80	698.10	2.30
	5.97	-7.66	1.06	4.53	-0.59	-5.88	-3.13	7.86	-2.42	9.13	-4.68	-2.20	0.31
2014	683.55	716.65	705.45	718.50	676.60	693.45	676.60	610.65	614.00	599.85	576.80	638.05	-60.05
	-2.08	4.84	-1.56	1.85	-5.83	2.49	-2.43	-9.75	0.55	-2.30	-3.84	10.62	-8.79
2015	620.10	595.40	583.60	582.50	613.00	588.15	574.70	574.15	598.05	611.30	619.65	614.50	-23.55
	-2.81	-3.98	-1.98	-0.19	5.24	-4.05	-2.29	-0.10	4.16	2.22	1.37	-0.83	-3.80
2016	610.10	617.40	642.50	657.60	656.95	644.10	631.30	645.95	661.45	674.30	727.65	706.95	92.45
	-0.72	1.20	4.07	2.35	-0.10	-1.96	-1.99	2.32	2.40	1.94	7.91	-2.84	15.15
2017	686.10	664.35	623.10	610.85	622.80	641.90	657.35	664.05	664.70	686.10	746.45	727.50	20.55
	-2.95	-3.17	-6.21	-1.97	1.96	3.07	2.41	1.02	0.10	3.22	8.80	-2.54	3.00
2018	743.85	760.85	786.85	764.75	776.40	756.20	742.30	739.75	748.30	754.85	719.95	730.10	2.60
	2.25	2.29	3.42	-2.81	1.52	-2.60	-1.84	-0.34	1.16	0.88	-4.62	1.41	0.35
2019	775.80	756.85	728.75	740.05	755.30	745.10	733.90	755.05	764.50	773.65	814.40	933.20	203.10
	6.26	-2.44	-3.71	1.55	2.06	-1.35	-1.50	2.88	1.25	1.20	5.27	14.59	26.18
2020	851.20	767.60	828.00	787.20	785.20	799.10	864.70	892.90	904.10	963.40	1072.30	1190.10	256.90
	-8.79	-9.82	7.87	-4.93	-0.25	1.77	8.21	3.26	1.25	6.56	11.30	10.99	30.18
2021	1105.50												-84.60
	-7.11												-7.65

CPO PRICE MOVEMENT SINCE 2011

	JAN	FEB	MAR	APR	MAY	JUN	JUL	AUG	SEP	OCT	NOV	DEC	Growth
2011	559.50	539.80	510.70	521.20	535.80	478.40	487.40	490.20	480.80	475.70	508.90	545.40	0.60
	2.70	-3.52	-5.39	2.06	2.80	-10.71	1.88	0.57	-1.92	-1.06	6.98	7.17	0.11
2012	514.20	536.20	592.30	621.50	585.90	566.40	564.40	551.60	446.20	425.20	423.20	417.90	-127.50
	-5.72	4.28	10.46	4.93	-5.73	-3.33	-0.35	-2.27	-19.11	-4.71	-0.47	-1.25	-23.38
2013	438.20	450.80	454.90	464.90	480.50	502.20	496.60	568.70	532.40	557.20	558.30	540.20	122.30
	4.86	2.88	0.91	2.20	3.36	4.52	-1.12	14.52	-6.38	4.66	0.20	-3.24	29.27
2014	524.00	590.00	569.70	567.70	524.90	535.00	539.10	439.60	474.50	457.20	439.50	460.60	-79.60
	-3.00	12.60	-3.44	-0.35	-7.54	1.92	0.77	-18.46	7.94	-3.65	-3.87	4.80	-14.74
2015	425.00	466.10	434.40	435.40	456.80	451.40	417.60	360.50	425.70	400.80	382.40	411.00	-49.60
	-7.73	9.67	-6.80	0.23	4.92	-1.18	-7.49	-13.67	18.09	-5.85	-4.59	7.48	-10.77
2016	432.50	481.90	532.20	564.00	537.00	506.80	524.70	559.10	581.60	514.90	554.70	582.70	171.70
	5.23	11.42	10.44	5.98	-4.79	-5.62	3.53	6.56	4.02	-11.47	7.73	5.05	41.78
2017	587.50	544.90	538.80	516.80	512.70	490.80	488.70	518.20	547.80	545.30	589.60	554.60	-28.10
	0.82	-7.25	-1.12	-4.08	-0.79	-4.27	-0.43	6.04	5.71	-0.46	8.12	-5.94	-4.82
2018	560.60	587.50	651.80	642.60	653.10	643.40	616.80	599.50	594.00	593.50	500.70	511.60	-43.00
	1.08	4.80	10.94	-1.41	1.63	-1.49	-4.13	-2.80	-0.92	-0.08	-15.64	2.18	-7.75
2019	569.40	550.10	525.90	529.70	519.30	515.80	513.60	522.20	546.60	587.90	680.00	795.20	283.60
	11.30	-3.39	-4.40	0.72	-1.96	-0.67	-0.43	1.67	4.67	7.56	15.67	16.94	55.43
2020	771.80	648.60	663.50	609.00	658.20	646.20	731.80	764.90	754.90	817.50	883.70	977.80	182.60
	-2.94	-15.96	2.30	-8.21	8.08	-1.82	13.25	4.52	-1.31	8.29	8.10	10.65	22.96
2020	969.30												-8.50
	-0.87												-0.87

KEDIA ADVISORY

KEDIA STOCKS & COMMODITIES RESEARCH PVT LTD.
Mumbai. INDIA.

For more details, please contact:
Mobile: +91 9323406035 / 9320096333 / 9619551022
Email: info@kediaadvisory.com
URL: www.kediaadvisory.com
SEBI REGISTRATION NUMBER - INH000006156

General Disclaimers: This Report is prepared and distributed by Kedia Stocks & Commodities Research Pvt Ltd. for information purposes only. The recommendations, if any, made herein are expression of views and/or opinions and should not be deemed or construed to be neither advice for the purpose of purchase or sale through KSCRPL nor any solicitation or offering of any investment /trading opportunity. These information / opinions / views are not meant to serve as a professional investment guide for the readers. No action is solicited based upon the information provided herein. Recipients of this Report should rely on information/data arising out of their own investigations. Readers are advised to seek independent professional advice and arrive at an informed trading/investment decision before executing any trades or making any investments. This Report has been prepared on the basis of publicly available information, internally developed data and other sources believed by KSCRPL to be reliable. KSCRPL or its directors, employees, affiliates or representatives do not assume any responsibility for, or warrant the accuracy, completeness, adequacy and reliability of such information / opinions / views. While due care has been taken to ensure that the disclosures and opinions given are fair and reasonable, none of the directors, employees, affiliates or representatives of KSCRPL shall be liable for any direct, indirect, special, incidental, consequential, punitive or exemplary damages, including lost profits arising in any way whatsoever from the information / opinions / views contained in this Report. The possession, circulation and/or distribution of this Report may be restricted or regulated in certain jurisdictions by appropriate laws. No action has been or will be taken by KSCRPL in any jurisdiction (other than India), where any action for such purpose(s) is required. Accordingly, this Report shall not be possessed, circulated and/ or distributed in any such country or jurisdiction unless such action is in compliance with all applicable laws and regulations of such country or jurisdiction. KSCRPL requires such recipient to inform himself about and to observe any restrictions at his own expense, without any liability to KSCRPL. Any dispute arising out of this Report shall be subject to the exclusive jurisdiction of the Courts in India.



